



KEY88 TOPRACK, color "SOFT"

UNTERLASS KEY88 TOPRACK

Datasheet

ULGDS Keyboard Drawer System:

- ULGDS pull-out drawer with linear guides = stability and precision
- Locks in any position
- Max. extension length: 370mm (longer possible*)
- 8 height adjustment levels: 95, 108, 121, 134, 147, 160, 173, and 186mm
- 2mm steel tray ensures maximum legroom
- Suitable for the heaviest master keyboards

Topracks:

- Can be mounted independently at an angle or flat
- 2RU when mounted at an angle
- 3RU when mounted flat
- When not in use, racks can be closed with 3U rack panels
- Operable from the sweet spot, directly behind the keyboard pull-out
- When mounted at an angle (in the rear, non-visible area, directly above the cable duct) there is still 1RU of space for power strips or similar

Cable Management:

- 2 cable trays can each be mounted in 3 different positions
- Cable outlet at the top (tabletop left / right rear)
- Keyboard cables are routed through the crossbar directly into the cable channel

di(fh) arno unterlass
zwölfergasse 8 | 7 | 13
A-1150 vienna
+43 (0)650 8843640

info@studiotisch.com
www.unterlass.info

UNTERLASS® Studio Furniture
Listen to your eyes.

[facebook](https://www.facebook.com/unterlass) / [instagram](https://www.instagram.com/unterlass)

Surfaces / Colors / Material:

- Tabletop (22mm) and legs (38mm) made of powder-coated MDF
- Crossbar, keyboard tray, rack angles, and cable channels made of powder-coated steel
- Over 30 color options (powder coating: tabletop, and legs)
- Real wood finishes available (veneers: tabletop and legs)
- All RAL or NCS colors available (lacquered legs)
- Combinations possible (e.g., legs in American walnut, tabletop in black)

Facts / Measurements:

- Total size: 1650 x 875 x 784mm (L x W x H)
- Tabletop: 1574 x 700mm @ 784mm height
- Maximum keyboard length: 1495mm
- Maximum keyboard height: 185mm
- Maximum keyboard depth: 400+ mm (can be even deeper**)
- Adjustable drawer height positions: 95, 108, 121, 134, 147, 160, 173, and 186mm
- Packaging crate: 1670 x 845 x 290mm, approx. 120kg

Optional Accessories:

- **KEY88 19" EXTENSION:** Expands the KEY88 by 16RU / 19" per side, adding 528mm to the left and/or right. Can also be retrofitted.
- **KEY88 STAND ALONE RACK:** 16RU / 19" rack in the shape of the KEY88
- **KEY88 TOPRACK CONVERSION KIT*:** Converts the KEY88 (Model 2025) into a KEY88 TOPRACK. Includes tabletop, rack angles, mounting materials, and rear crossbar
- Nearfield Desktop Stands (not included): 300 x 200 x 190mm (L x W x H)

*) Optional longer fixed rails allow for a longer extension path. Depending on the length, the rails may protrude at the back

***) Deeper keyboards will extend forward by the difference beyond 400mm



Colors

Carbon 125
LPC 90125

Grafit smooth
LPC 79003

Donkergrijs
LPC 75003

Lchgrijs smooth
LPC 76005

Wit
LPC 91100

Soft
LPC 76003

Oltargrijs
LPC 86002

Misgrijs smooth
LPC 76010

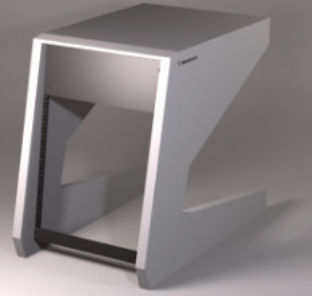
Woods

American walnut

Zetrono



19" Extension



UNTERLASS[®]
Listen to your eyes



2 x 19" Extension



19" Extension

